



**IRCLASS**  
Indian Register of Shipping



### Machinery Module

The Machinery Module uses Sea Trial and Shop Trial Data to create reference points against which vessel performance can be compared. The day-to-day data obtained from Ships' owners/managers is analyzed, compared with the reference points and the Engine Performance curves are plotted. The report generated from these curves would enable to identify probable causes and to take suitable remedial actions

---

## VALUE ADDED SERVICES

### Assistance to Vessel's staff

VPMS Software will provide a value-added service to assist the Ship's staff in optimizing vessel performance

### Data Repository and Analysis

It is further envisaged to have a repository of operation and performance data of various ship types, and to use statistical techniques to carry out trend analysis

### Major Aspects of Analysis

- Fuel Consumption
- Turbocharger Efficiency
- Air Cooler Efficiency



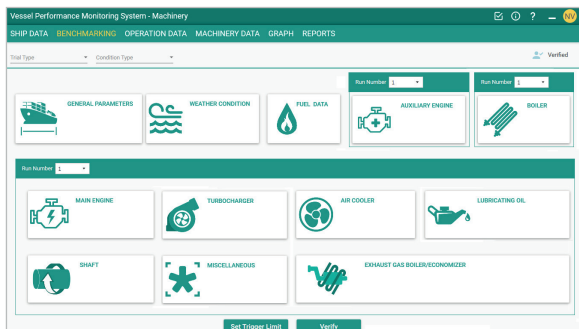
# VESSEL PERFORMANCE MANAGEMENT SYSTEM

---

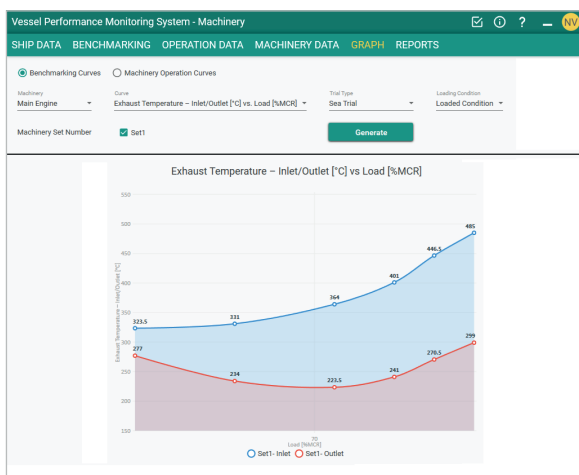
VPMS Software is developed to provide the ship owners/managers with a diagnostic tool to monitor the performance of the Vessel in order to optimize the Fuel Oil and Cylinder Lube Oil consumption

It is possible to integrate vessel performance parameters to a central data repository using a web-based platform. The information provided will be analyzed to advise the ship owners/managers about vessel performance. The service ensures sovereignty and security of the data provided

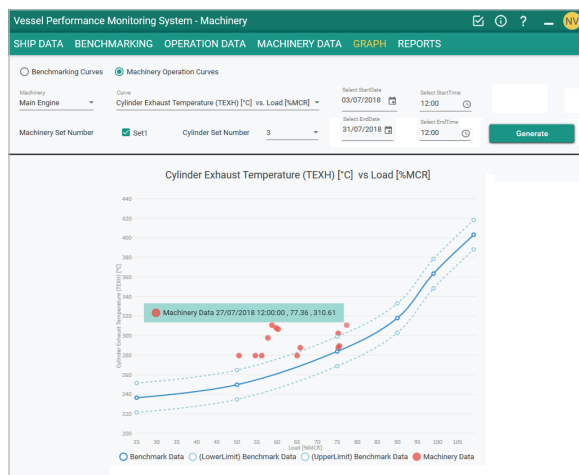
## DATA COLLECTION SERVICES



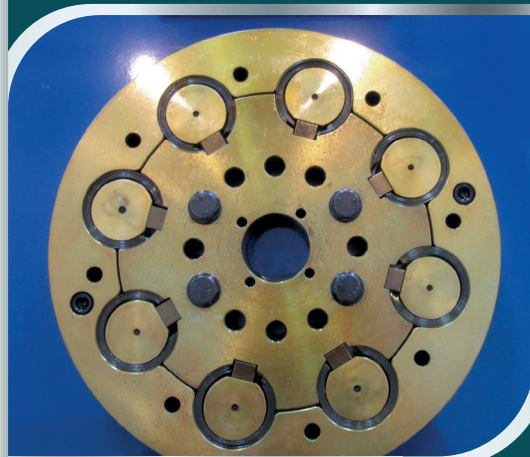
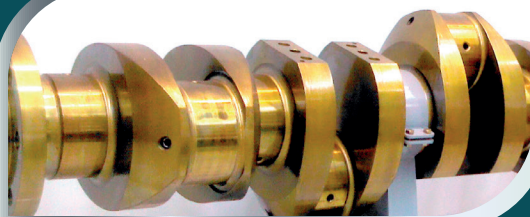
### DATA COLLECTION PLATFORM



### BENCHMARKING CURVE SAMPLE



### COMPARISON OF MACHINERY PERFORMANCE PARAMETERS AGAINST REFERENCE POINTS



**IRCLASS**  
Indian Register of Shipping

#### Head Office

52A, Adi Shankaracharya Marg, Opp. Powai Lake,  
Powai, Mumbai - 400 072, India  
Email: ho@irclass.org  
Web: www.irclass.org  
Tel : +91 22 3051 9400 / +91 22 7119 9400