

Achieving
Quality
Safety
Reliability
Together





ABOUT US

IRCLASS Systems and Solutions Pvt Ltd (ISSPL), promoted by Indian Register of Shipping, provides one stop solutions for Testing, Inspection & Certification requirement of Industry to achieve Quality, Safety and Reliability across value chain. ISSPL is recognized for its technical competency and experience for more than 40 years.

ISSPL is certified to ISO 9001, Accredited to ISO 17020 as “Type A” Inspection Body and Testing Services are accredited to ISO 17025.

ISSPL – Industrial Services helps clients with its comprehensive range of services towards achieving Quality, Safety and Reliability during whole life cycle of the assets (CAPEX & OPEX) from Planning, Design, Procurement, Manufacturing, Construction, Testing, Commissioning and Operation.

OUR GROUP



ISSPL – Industrial Services providing Inspection Services for more than 40 years to various market sectors like Oil & Gas, Petrochemicals, Fertilizers, Residential, Commercial, Retail, Bridges, Ports, Airports, Roads, Railways, Stadiums, Logistic Warehouses, Special Economic Zones, Dams, Irrigation Structures, Thermal, Nuclear, Hydro, Solar, Wind, General Engineering, Steel, Cement, Chemical, Electrical, Electronics, Instrumentation, Automotive, Aerospace, Defence etc.

GML was wholly acquired by ISSPL in the year 2015 and is a Division of ISSPL. Established in 1980 at Bangalore, Geological & Metallurgical Laboratories (GML) serves the minerals & metals for quality assessment services through laboratory testing and construction materials.



SAFESS was established in 1993 and became a wholly owned subsidiary of ISSPL in 2016 and having more than 25 years of experience, in Testing, Inspection & Certification of plants, equipment & machinery. SAFESS is recognized by PESO Nagpur, as an “Inspection Authority” and as a “Competent Person” under The Static & Mobile Pressure Vessels (Unfired) Rules and The Petroleum Rules.

Indian Register Quality Systems (IRQS) is a division of ISSPL and is a leading Management Systems Certification body offering various ISO Certifications and Accredited Training Programs to the Industry.



Indian Register of Shipping (IRS) is an International Ship Classification Society founded in 1975 and a member of the International Association of Classification Societies (IACS).

Centre of Excellence in Maritime & Shipbuilding (CEMS) is a skill development initiative undertaken by Ministry of Shipping, Govt. of India, along with Siemens Industry Software India Pvt Ltd & Indian Register of Shipping (IRS) in line with Prime Minister’s initiative of Skill India. The project aims to impart Industry 4.0 relevant training in latest software & hardware tools and technology used in engineering industry.





SERVICES

- **Design Review**
- **Third Party/Second Party Inspections**
- **Vendor Assessment**
- **Field Quality Assurance**
- **Project Management Assistance**
- **Owner's/Lender's Engineer**
- **Health, Safety & Environment**
- **PNGRB, IBR, PESO Services**
- **Advanced Non Destructive Testing**
- **Civil NDT & Condition Assessment**
- **Laboratory Testing**
- **Solar Plant Performance Testing**
- **In-Service Inspection**
- **Failure Analysis**
- **Technical Due Diligence**



A few of our esteemed clientele

L&T | ISRO | ADANI | BHEL | SIEMENS | ONGC |
MAHINDRA SUSTEN | JNPT | VEDANTA | HAL |
DANGOTE | IOCL | NAYARA ENERGY | ABB |
DRDO | BDL | ASL | DGQA



ACCREDITATIONS

- ISO 9001 Certified by BSI
- “Type A” Inspection Body as per ISO 17020 accredited by NABCB
- “Third Party Laboratory” as per ISO 17025 accredited by NABL
- “Inspecting Authority” as per IBR 1950 approved by CBB
- “Third Party Agency” for certification of ERDMP approved by PNGRB
- “Third Party Agency” for Inspection/Audits as per T4S guidelines approved by PNGRB
- “Competent Authority” as per Petroleum Rules 2002 approved by PESO
- “Competent Authority” as per SMPV(U) Rules 2016 approved by PESO

QUALIFIED ENGINEERS

- Certification Scheme for Welding and Inspection Personnel (CSWIP)
- American Society for Non Destructive Testing (ASNT)
- American Petroleum Institute (API)
- American Welding Institute (AWS)
- National Association of Corrosion Engineers (NACE)
- Directorate General of Factory Advisory Service and Labour Institute (DGFASLI)
- Directorate of Industrial Safety and Health (DISH)
- Indian Boiler Regulations 1950 (IBR)
- The Petroleum and Natural Gas Regulatory Board (PNGRB)
- Petroleum and Explosives Safety Organisation (PESO)





OIL & GAS

Upstream (Offshore & Onshore)

- Process Platforms
- Wellhead Platforms
- Drilling Equipment
- PLEM (Pipeline End Manifold)
- Subsea Equipment



Midstream (Offshore & Onshore)

- Submarine Pipelines
- Single Point Mooring Systems (SPMs)
- Cross Country Pipelines,
- POL Installations
- LPG & LNG Installations



Downstream

- Refineries
- Petrochemical
- Storage Terminals
- Product Pipelines
- City Gas Distribution Pipelines
- Group Gathering Stations
- Static & Rotating Equipment
- Retail Outlets
- ALDS / CNG Stations

Our Rich Experience

- 50+ Offshore Platforms
- 200+ km Subsea Cable laying
- 1200+ km Submarine Pipelines
- 5000+ Shutdown man-days
- 10000+ Retails Outlets
- World's Largest Crude Oil Column
- Heavy Engineering Equipment



Our Value Addition

- One Stop Solution – CAPEX & OPEX
- Engineers of all major disciplines including Naval Architects & Master Mariners
- Advanced NDT Instruments & Services
- Well Equipped In-house Library
- Global Performance
- Design Review Capabilities
- Statutory Approvals Assistance



A few of our esteemed clientele

- DANGOTE
- ONGC
- L&T HYDROCARBON
- BG
- HPCL
- IOCL
- BPCL
- NAYARA ENERGY
- SUEZ OIL & GAS
- WORLEY
- TOYO ENGINEERING
- CAIRN OIL & GAS



Contact:
Mr. Amit Ketkar
Business Head, Oil & Gas

+91 98676 28172

amit.ketkar@irclass.org



BUILDINGS & INFRASTRUCTURE

Buildings

- Residential
- Commercial
- Educational
- Hospitality
- Health Care
- Industrial
- Logistics
- Multiplexes
- Multi Level Car Parkings
- Recreational



Infrastructure

- Sea Ports
- Inland Waterways
- Multi Modal Terminals
- Bridges
- Railways
- Electric Charging Stations
- Transmission & Distribution
- Airports
- Stadiums
- Manufacturing Units
- Special Economic Zones
- Dams & Irrigation Structures
- Roads
- Highways



A few of our esteemed clientele

- AFCONS
- HCC
- JNPT
- Iwai
- RVNL
- PGCIL
- MIAL
- MMRDA
- CIDCO
- DDA
- CSIDCL
- MPAGRO

Our Rich Experience

- World's Highest Railway Bridge
- Asia's Longest Double Decker Bridge
- Green Building – Corporate Office
- 7.5 km Undersea Electrification Cable
- Space Shuttle Integration Facilities
- India's longest Waterway Project
- 100 acre Centralized Parking Plaza
- Tunnels and Viaducts



Our Value Addition

- Onshore & Marine Structures Expertise
- Civil, MEP, PHE & HSE under one roof
- Site/Mobile Laboratory Testing
- Geographical Reach
- In-house Design Review and NDT



Contact:
Mr. Pradeep Kavtekar
Business Head, Buildings & Infrastructure

+91 98335 84980
pradeep.kavtekar@irclass.org



PORTS & MATERIAL HANDLING

Activity

- New Ports Development
- Ports Modernization
- Road & Rail Connectivity
- Dredging Activities
- Port Lead Industrialization
- Coastal Economic Zones
- Cargo Handling & Storage

A few of our esteemed clientele

- | | |
|--------|---------|
| • JNPT | • IPGL |
| • MBPT | • GSL |
| • Iwai | • NMPT |
| • CSL | • CPT |
| • MDL | • IPRCL |
| • HDC | • ADANI |
| • VPT | • JSW |



Assets & Systems

- Shipyards
- Dry Docks
- Ship Breaking Units
- Inland Waterways
- Jetties
- Multi Modal Terminals
- Navigational Lock Gates
- Marshaling Yards
- Fire Fighting Systems
- Customs & Surveillance Systems
- Material Handling Systems
- Storage Yards
- Cross Country Pipelines
- Cross Country Conveyors
- Loading / Unloading Arms

Our Rich Experience

- Jetties
- Port Cranes
- Material Handling & Storage Equipment
- Cross Country Conveyors
- SEZ Facilities
- Navigational Lock Gates
- Fire Fighting Systems
- Dredging Supervision
- Floating Pontoons
- Operational & Performance Audits



Our Value Addition

- In-house Marine R&D Center
- Project Management Assistance
- Knowledge on Requirement of Classification Rules
- Major Engineering Disciplines Under One Roof
- Geographical Reach
- Civil NDT & Condition Assessment



Contact:
Mr. Pradeep Kavtekar
Business Head, Buildings & Infrastructure

+91 98335 84980
pradeep.kavtekar@irclass.org



RAILWAYS & GENERAL ENGINEERING

Equipment

- Castings
- Forgings
- Fabrication
- Forming
- Machining
- Finishing
- Electrical
- Instrumentation
- Automation
- PLC & SCADA Systems
- Pipes
- Motors
- Valves
- Pumps
- Escalators
- Tanks
- Pressure Vessels
- Heat Exchangers
- Compressors

A few of our esteemed clientele

- RDSO
- RVNL
- COFMOW
- BMRCL
- MMRCL
- JINDAL RAIL
- WESTERN RAILWAYS
- IPRCL



Assets

- Rolling Stock
- Metro & High Speed Rail
- Maintenance Depots
- Residential Area Infrastructure
- Tunnels & Ventilation
- ROBs & RUBs
- Bridges & Viaducts
- Under Ground & Elevated Stations
- HT Electrification & Substations
- Railway Siding Works
- Electric Busses



Our Rich Experience

- Railway Siding Works
- Tunneling Site QA/QC & Safety
- HT Overhead Electrification
- Electrical Substations
- NDT Training
- Tankers & Wagons
- Wagon Repair Facilities



Our Value Addition

- Vendor's Capability Assessment
- Expediting
- Advanced NDT
- Geographical Reach
- Engineers From All Major Disciplines
- Specific Domain Expertise



Contact:
Mr. Kiran Mhaskar
Business Head, Railways & General Engineering

+91 88507 83112

ks.mhaskar@irclass.org

Head Office

52A, Adi Shankaracharya Marg, Opp. Powai Lake,
Powai, Mumbai - 400 072, India

Email: industrial_services@irclass.org

Web: www.irclass.org/industrial

Tel : +91 22 3051 9400 / +91 22 7119 9400

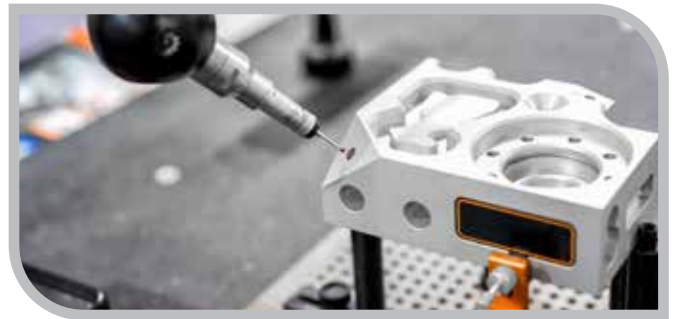
+91 88 7942 7273



AEROSPACE & DEFENCE

Equipment

- Aero Engine & Accessories
- Airframe Components
- Electrical Components
- Electronics & Instrumentation
- Radar & Navigational Equipment
- Submarine Fabrication
- Combat Vehicles
- Material Handling Equipment
- Personnel Protective Equipment



Assets

- Launch Pads
- Integration Facilities
- Visitors Galleries
- Maintenance Hangers
- Pens & Bunkers
- Technical Area Infrastructure
- Residential Area Infrastructure
- Jetties
- Dry Docks
- Runways
- Firefighting Facilities

A few of our esteemed clientele

- | | |
|---------|--------|
| • ISRO | • ASL |
| • HAL | • MDL |
| • DGAQA | • DRDL |
| • DRDO | • DGQA |
| • BDL | • MES |



Our Rich Experience

- Metal, Plastic & Composite Parts
- Precision Measuring Instruments
- Canisters
- Booster & Sustainer Liners
- Rocket Motor Casings
- Ground Equipment
- Submarine Sub Assemblies
- Metallurgical Failure Analysis
- Space Shuttle Integration Facilities



Our Value Addition

- Laboratory Testing
- Non Destructive Testing
- Failure Analysis
- Industry Specific Engineers
- In-house Codes & Standards Library



Contact:
Mr. Kiran Mhaskar
Business Head, Aerospace & Defence

+91 88507 83112
ks.mhaskar@irclass.org



POWER & UTILITIES

Sectors

- Nuclear
- Thermal
- Hydro
- Transmission & Distribution



Equipment

- Reactors
- Boilers
- Turbines
- Generators
- Pressure Vessels
- Balance of Plant
- HT/LT Motors
- Transformers & Switch Gears
- PLC & SCADA Systems

Assets

- Primary & Secondary Islands
- Chimneys
- Cooling Towers
- Water Treatment Plants
- Ash Dykes
- Dams
- Transmission Lines



A few of our esteemed clientele

- | | |
|------------|-------------|
| • NPCIL | • MB POWER |
| • NFC | • IOT INFRA |
| • ITER | • STERLITE |
| • L&T | • PGCIL |
| • BHEL | • SJVNL |
| • RELIANCE | |

Our Rich Experience

- Dams
- Hydro Turbines
- Turbine Island Infrastructure of Nuclear Power
- Primary Piping Package of Nuclear Power
- CCWS, CWS & HRS of Nuclear Power
- BTG & BOP of Thermal Power Plants
- FGD Packages
- HT Transmission Lines
- Field Instrumentation & SCADA System



Our Value Addition

- NPCIL & NTPC Approved Engineers
- Domain Specific Engineers
- Process Certified Engineers
- Global Inspections
- Civil NDT & Condition Assessment
- Advanced NDT



Contact:
Mr. Kiran Mhaskar
Business Head, Power & Utilities

+91 88507 83112

ks.mhaskar@irclass.org



PROCESS INDUSTRIES

Plants

- Steel
- Cement
- Chemical
- Fertilizer
- Pulp & Paper
- Industrial Gases
- Incinerators
- Cryogenics
- Plastics
- Water Treatment
- Food Processing
- Pharmaceutical



Plant Engineering

- Vessels & Tanks
- Boilers
- Heat Exchangers
- Piping
- Valves
- Filters
- Pumps
- Furnaces & Heaters
- Ladles
- Crushers
- Clinkers
- Feeders & Conveyors
- Blenders, Dryers & Blasters
- Switch Gears & SCADA Systems
- Packaging Systems

A few of our esteemed clientele

- | | |
|----------------------|--------|
| • DEEPAK NITRATE | • ABG |
| • CHETTINAD CEMENT | • JSW |
| • PIDILITE | • HUL |
| • NEPA | • TOYO |
| • CHAMBAL FERTILISER | |

Our Rich Experience

- Fertilizer Plant Equipment
- Pulp & Paper Processing Equipment
- Liquid & Gas Storage Tanks
- Process Plant Automation Equipment
- Water & Waste Water Treatment Plants
- Reactors, Heat Exchangers, Agitators & Blenders
- Cement Plant Erection, Testing & Commissioning
- In-process Steel Billets, Plates & Sections
- Cross Country Conveyors



Our Value Addition

- API & NACE Certified Engineers
- Domain Specific Expertise
- Global Procurement Inspections
- Civil & Mechanical NDT
- Condition Assessment of Plants



Contact:
Mr. Kiran Mhaskar
Business Head, Process Industries

+91 88507 83112

ks.mhaskar@irclass.org



RENEWABLE ENERGY

Sectors

- Solar Power
- Wind Power



Equipment

- PV Modules
- Module Mounting Structures
- Inverters, Transformers
- Batteries & BESS
- Balance of Systems
- Gearbox
- Generator
- Auxiliaries

A few of our esteemed clientele

- | | |
|---------------|---------------------|
| • EDEN | • STERLING & WILSON |
| • ACME | • L&T SOLAR BU |
| • AVAADA | • MAHINDRA SUSTEN |
| • RENEW POWER | • SIEMENS GAMESA |
| • AZURE | • ADANI |

Our Rich Experience

- PV Module in Process Inspections
- Site QA/QC
- Feasibility Studies
- Plant Performance Analysis
- Site Safety Supervision
- Project Management Assistance
- Owner's Engineer
- Lender's Engineer
- Technical Due Diligence



Our Value Addition

- Drone Thermography
- Solar Plant Performance Testing
- IV Curve Testing
- Global Reach
- Domain Specific Electrical Engineers
- Preliminary Feasibility Studies



Contact:
Mr. Deepak Gaikar
Business Head, Renewable Energy

+91 98339 79350

Deepak.gaikar@irclass.org

Head Office

52A, Adi Shankaracharya Marg, Opp. Powai Lake,
Powai, Mumbai - 400 072, India

Email: industrial_services@irclass.org

Web: www.irclass.org/industrial

Tel : +91 22 3051 9400 / +91 22 7119 9400

+91 88 7942 7273



TECHNICAL SERVICES

Areas of Expertise

- Design Review
- Structural Analysis
- Fitness For Service (FFS) Analysis
- Residual Life Assessment (RLA)
- Structural Restoration Schemes
- Certificate of Control (As per SMPV Rules)
- Product Certification (As per IBR, PESO)
- Condition Assessment of Cranes / Tanks
- Process Design Validation
- Vibration Analysis & Noise Measurement
- Technical Training

A few of our esteemed clientele

- | | |
|----------|---------------------|
| • HPCL | • MUKAND |
| • BPCL | • SRB INTERNATIONAL |
| • IOCL | • MUMBAI PORT TRUST |
| • HCC | • RELIANCE |
| • ANUPAM | • IPGL |

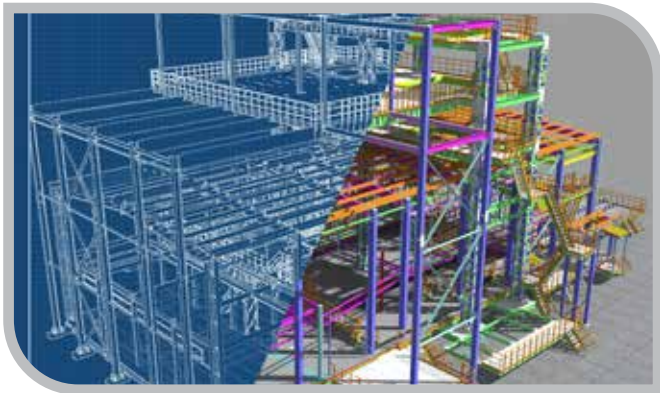
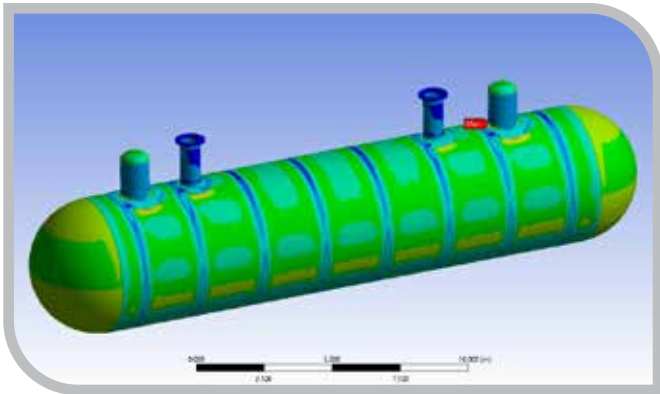


Assets we cover

- Mounded Bullets & Horton Spheres
- CP Systems
- Cryogenic Vessels
- Tanks & Vessels
- Boilers & Heat Exchangers
- Piping & Pipelines
- Civil & Steel Structures
- Electrical & Instrumentation Systems
- Fire Fighting Systems
- Cranes & Cross Country Conveyors
- Other Material Handling Equipment
- Rotary Equipment
- Vapour Recovery Units (VRU)

Our Rich Experience

- Mounded Bullets
- Pressure Vessels
- Storage Tanks
- Cryogenic Vessels
- Port & Industrial Cranes
- Material Handling Equipment
- Barges & Jetties
- Civil & Steel Structures
- Electrical & Firefighting Systems
- Vapor Recovery Units (VRUs)
- Port & Oil Depots Fire Fighting Systems



Our Value Addition

- Domain Specific Design Review Engineers
- Offshore & Onshore Structures under one roof
- Latest Softwares
- Strong R&D Background for Marine Structures
- Latest Codes & Standards Library
- Technical Training
- PESO & IBR Certification



Contact:
Mr. Vivek More
Manager, Technical Services

+91 98337 71979
vivek.more@irclass.org



HEALTH SAFETY & ENVIRONMENT

Services

- Health, Safety & Environment Audits
- Fire & Electrical Safety Audits
- Construction Site Safety Coordination
- HAZOP, HAZID, QRA, RAMS & SIL Studies
- Process Safety Management
- Safety Training & Capacity Building
- In-Service Verification of Lifting Equipment
- Regulatory Mapping for HSE Compliance
- Assistance for HSE Manuals Preparation
- Industrial Hygiene Services

A few of our esteemed clientele

- | | |
|-----------------------|----------------|
| • GE | • Petronet LNG |
| • Deutsch Bank | • Godrej |
| • Vedanta | • ONGC |
| • ThinkGas | • IOCL |
| • Vizag Port | • HCC |
| • Aditya Birla Group | • SBI |
| • Mahindra & Mahindra | • RCF |



We help to...

- Complying with Regulations & Standards
- Reduce Risk of Litigations, Penalties & Compensations
- Ensure Business Continuity
- Be Ethical by Protecting Life and Environment
- Enhance Market Reputation and Brand Image



Our Rich Experience

- Oil & Gas Installations
- Process Industries
- Port Facilities
- Commercial Spaces
- Banks
- Logistic Warehouses
- Metro Rail Tunnels, Viaducts & Stations
- Railways Facilities
- Transmission Lines
- Construction Sites



Our Value Addition

- ERDMP Certification
- T4S Audits of NGPL, PPPL, LNG, LPG & CGD Networks
- DGFASLI & State Approved Auditors
- Latest Software for Risk & Safety Studies



Contact:
Mr. Doshantak Hingwe
Business Head, HSE

+91 98928 84547

Doshantak.hingwe@irclass.org

Head Office

52A, Adi Shankaracharya Marg, Opp. Powai Lake,
Powai, Mumbai - 400 072, India

Email: industrial_services@irclass.org

Web: www.irclass.org/industrial

Tel : +91 22 3051 9400 / +91 22 7119 9400

☎ : +91 88 7942 7273



CONVENTIONAL & ADVANCED NDT

Advanced NDT

- Phased Array Ultrasonic Testing (PAUT)
- Time of Flight Diffraction Testing (TOFD)
- Remote Visual Inspection (RVI)
- Remote Field Electromagnetic Testing (RFET)
- Internal Rotating Inspection System (IRIS)
- Near Field Testing (NFT)
- Magnetic Flux Leakage (MFL)



A few of our esteemed clientele

- | | |
|----------|-----------|
| • L&T | • BPCL |
| • IOCL | • CAIRN |
| • OTSUKA | • TEMA |
| • PRAJ | • FINOLEX |
| • MBPT | |

Conventional NDT

- Visual Inspection (VT)
- Ultrasonic Testing (UT)
- Radiography Testing (RT)
- Magnetic Particle Testing (MT)
- Liquid Penetrant Testing (LT)
- Eddy Current Testing (ET)

Our Rich Experience

- Refineries
- Process Industries
- Storage Tanks
- Heat Exchangers
- Heavy Fabrication Equipment
- Rail Joints
- Steel Chimneys
- Steel Gantries
- Shut Down Inspections
- Cross Country Pipelines



Our Value Addition

- ASNT Level III Engineers
- Conventional & Advanced NDT under One Roof
- State of the Art Instruments with live software updates and cloud syncing
- Advanced Sensors for accurate data capturing
- In-house library with latest codes and standards



Contact:
Mr. Mahesh Karande
Business Head, Advanced NDT

+91 99200 30204
mahesh.karande@irclass.org



CIVIL NDT & CONDITION ASSESSMENT



Services

- Assessment of Quality of In Situ Concrete
- Assessment of Structural Soundness
- Assessment of Structures for Change of use
- Investigation of Distressed Structures due to Fire, Corrosion, Overload, Aging etc
- Design Review and Preparation of As Built Drawings
- Preparation of Retrofitting Schemes
- PMC of Retrofitting Works
- Final Assessment of Fit for Service

A few of our esteemed clientele

- | | |
|---------------|----------|
| • Vedanta | • RCFL |
| • Nayara | • NABARD |
| • AECOM | • IAL |
| • BEML | • CPWD |
| • RPG | • VPT |
| • Continental | • L&T |



Competency in various structures

- Buildings – Residential, Commercial & Industrial
- Power – Nuclear, Thermal, Hydro, Wind & Solar
- Bridges – Concrete & Steel Structures
- Airports – Terminal Buildings & Hangers
- Railways – Stations, Bridges, FOBs & Tunnels
- Water & Wastewater – ESR, GSR, STP & WTPs
- Marine Structures – Ports, Docks, Jetties, Aquaducts & Dams
- Special Structures – Chimneys, Silos & Monuments

NON DESTRUCTIVE & SEMI DESTRUCTIVE TESTING

Conventional

- Ultrasonic Pulse Velocity Test
- Rebound Hammer Test
- Carbonation Depth Measurement Test
- Half-cell Potential Test
- Cover Meter Test
- Core Extraction & Compression Test
- Chemical Survey (pH, Chloride, Sulphate)



Advanced

- Capo Test
- Crack Gauge/Crack Depth Test
- Reinforcement Scanning by GPR Live Pro
- Reinforcement Corrosion Mapping
- Concrete Resistivity
- Corrosion Rate of Reinforcement
- Full Scale Load Test
- Sulphate & Chloride Profile Test

Mechanical NDT

- Ultrasonic Thickness Measurement
- Magnetic Particle Inspection
- Ultrasonic Testing
- Liquid Penetrant Testing
- Hardness Testing



Laboratory Test (NABL)

- All Mechanical & Chemical Testing for Construction Materials



Contact:
Mr. Saiprasad Gaonkar
Business Head, Civil NDT & Condition Assessment

+91 93221 27781
saiprasad.gaonkar@irclass.org

Head Office

IRCLASS Systems and Solutions Pvt Ltd

52A, Adi Shankaracharya Marg, Opp. Powai Lake, Powai, Mumbai – 400 072

Phone: +91 22 3051 9400/7119 9400, Fax: +91 22 3051 9888

Mobile: +91 88794 27273, E-mail: industrial_services@irclass.org

Website: www.irclass.org/industrial

India

Area Offices

Bangalore

Mr. R Raja

Phone: +91 80 2357 8658/59

E-mail: bangalore@irclass.org

Baroda

Mr. Mihir Upadhyay

Phone: +91 265 2321 953/54

E-mail: baroda@irclass.org

Bhopal

Mr. Prashil Waghmare

Phone: +91 755 2601 184/4034 526

E-mail: bhopal@irclass.org

Chennai

Mr. M Shanmugavelu

Phone: +91 44 2825 4615/4973

E-mail: chennai@irclass.org

Delhi

Mr. Pradeep Bansal

Phone: +91 11 4984 5600

E-mail: delhi@irclass.org

Hyderabad

Mr. R Ambareshwaram

Phone: +91 40 2715 2110

E-mail: hyderabad@irclass.org

Kolkata

Mr. Soumesh Dutta

Phone: +91 33 4070 5183/84/85

E-mail: calcutta@irclass.org

Mumbai

Mr. Dinesh Kadganchi

Phone: +91 22 3051 9400

E-mail: irsismumbai@irclass.org

Pune

Mr. S Sreevathsa

Phone: +91 20 6600 3250/60

E-mail: pune@irclass.org

Visakhapatnam

Mr. Madhu Babu

Phone: +91 891 2523 877/878

E-mail: vizag@irclass.org

Sub Offices

Ahmedabad

Mr. Mihir Upadhyay

Phone: +91 79 2658 4077

E-mail: baroda@irclass.org

Goa

Mr. Dinesh Kadganchi

Phone: +91 832 2513 591

E-mail: goa@irclass.org

Kandla

Mr. Mihir Upadhyay

Phone: +91 2836 258 623

E-mail: kandla@irclass.org

Kochi

Mr. M Shanmugavelu

Phone: +91 484 2354 988/89/90

E-mail: kochi@irclass.org

Trichy

Mr. M Shanmugavelu

Phone: +91 431 2514 258

E-mail: trichy@irclass.org

Resident Engineers

Bharuch | Bhubaneswar | Coimbatore | Hubli | Indore | Jaipur | Lucknow |
Ludhiana | Nagpur | Nashik | Rajkot | Raipur | Surat | Vapi

40 YEARS OF EXCELLENCE

 **IRCLASS**
SYSTEMS AND SOLUTIONS PRIVATE LIMITED

Overseas

Offices

Qingdao

Phone: +86 532 8576 1404
E-mail: qingdao@irclass.org

Colombo

Phone: +94 11 2674 885
E-mail: colombo@irclass.org

Dubai

Phone: +9714 4541 538
E-mail: dubai@irclass.org

Greece

Phone: +30 210 4535 357/30
E-mail: piraeus@irclass.org

Houston

Phone: +1 281 3608 900
E-mail: houston@irclass.org

London

Phone: +44 20 3963 1921/22/23
E-mail: london@irclass.org

Doha

Phone: +974 4423 1218
E-mail: doha@irclass.org

Singapore

Phone: +65 6423 4861
E-mail: singapore@irclass.org

Service Coverage

APAC

Australia | Bangladesh | Hong Kong | Indonesia | Japan | Malaysia | South Korea | Taiwan | Thailand | Vietnam

MENA

Bahrain | UAE | Egypt | Jordan | Oman | Saudi Arabia

EU & Scandinavia

Austria | Belgium | Denmark | Finland | France | Germany | Hungary | Italy | Luxembourg | Netherlands
Norway | Poland | Romania | Spain | Sweden | Switzerland | Turkey | Scotland | Ukraine

Americas

Argentina | Brazil | Canada | Mexico | USA

Africa

Niger | Nigeria | Tanzania



www.irclass.org/industrial



industrial_services@irclass.org



+91 88794 27273

Head Office

52A, Adi Shankaracharya Marg, Opp. Powai Lake,
Powai, Mumbai - 400 072, India
Email: industrial_services@irclass.org
Web: www.irclass.org/industrial
Tel : +91 22 3051 9400 / +91 22 7119 9400
☎ : +91 88 7942 7273